

**Empowering
teaching teams:
An essential factor
in the success of
innovative learning
environments**

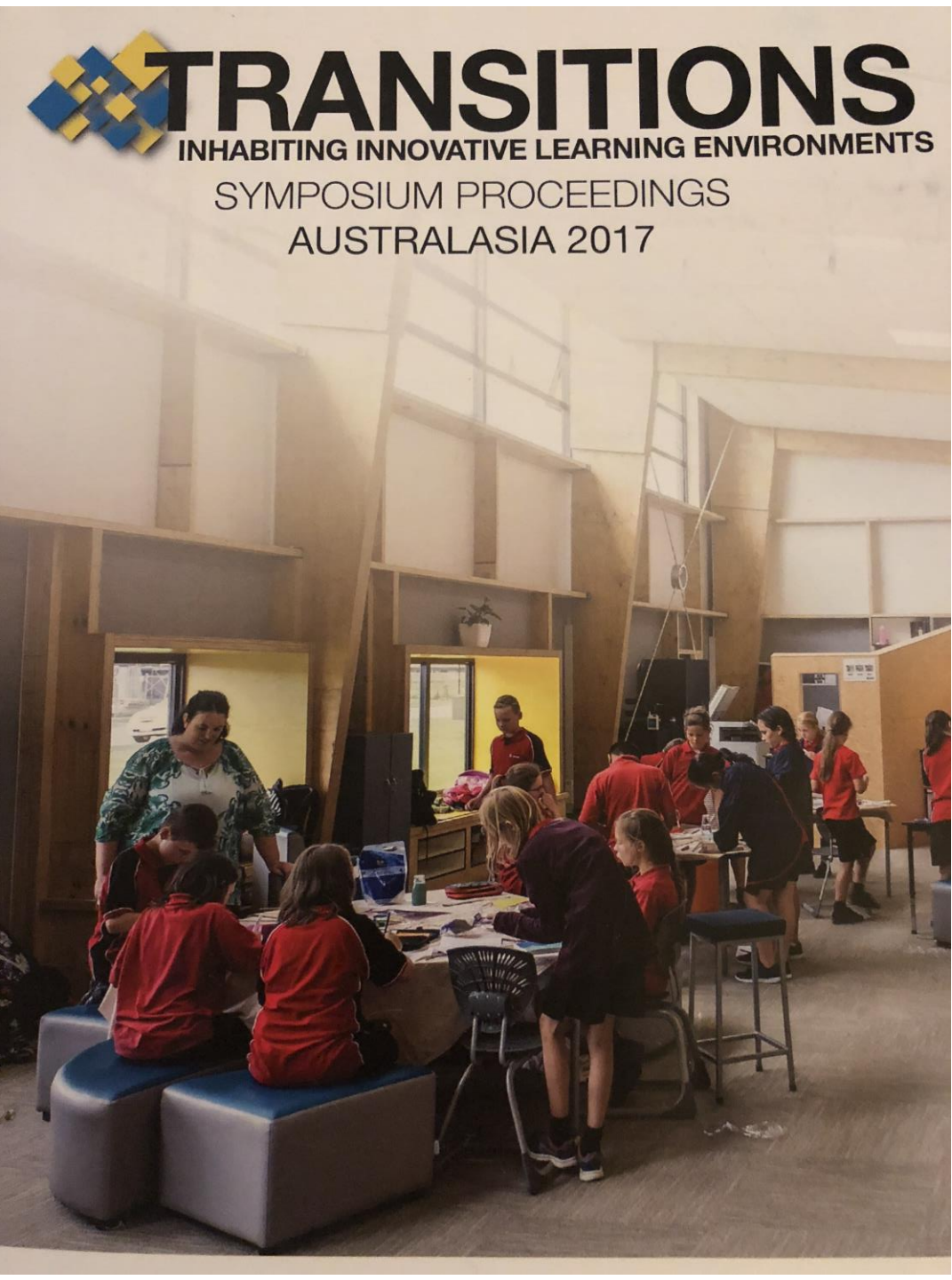
Anne Knock
PhD Candidate
ILETC Project



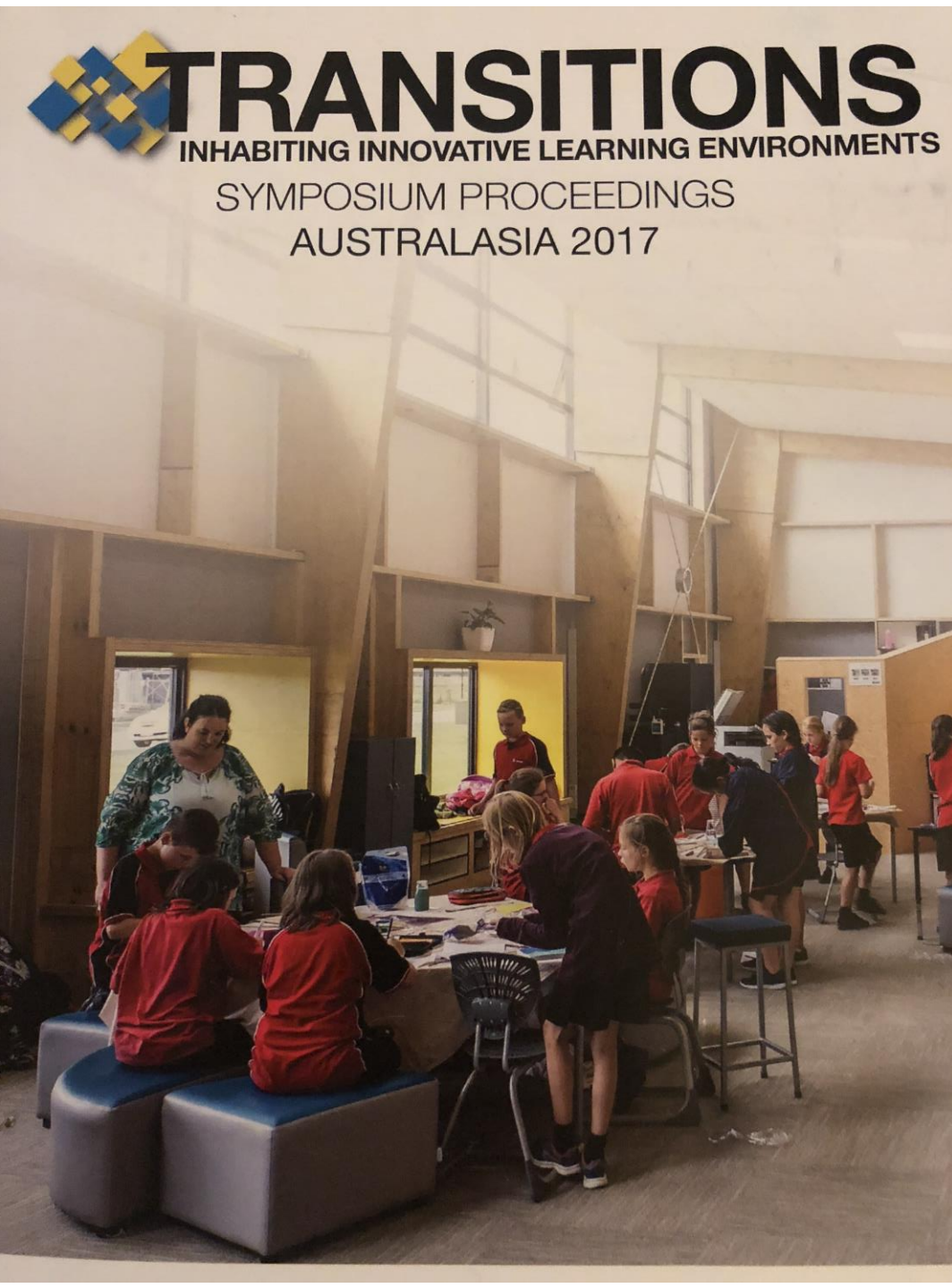
From: <http://www.wordslingersok.com/2014/01/passing-the-baton-will-you-take-it>

TRANSITIONS

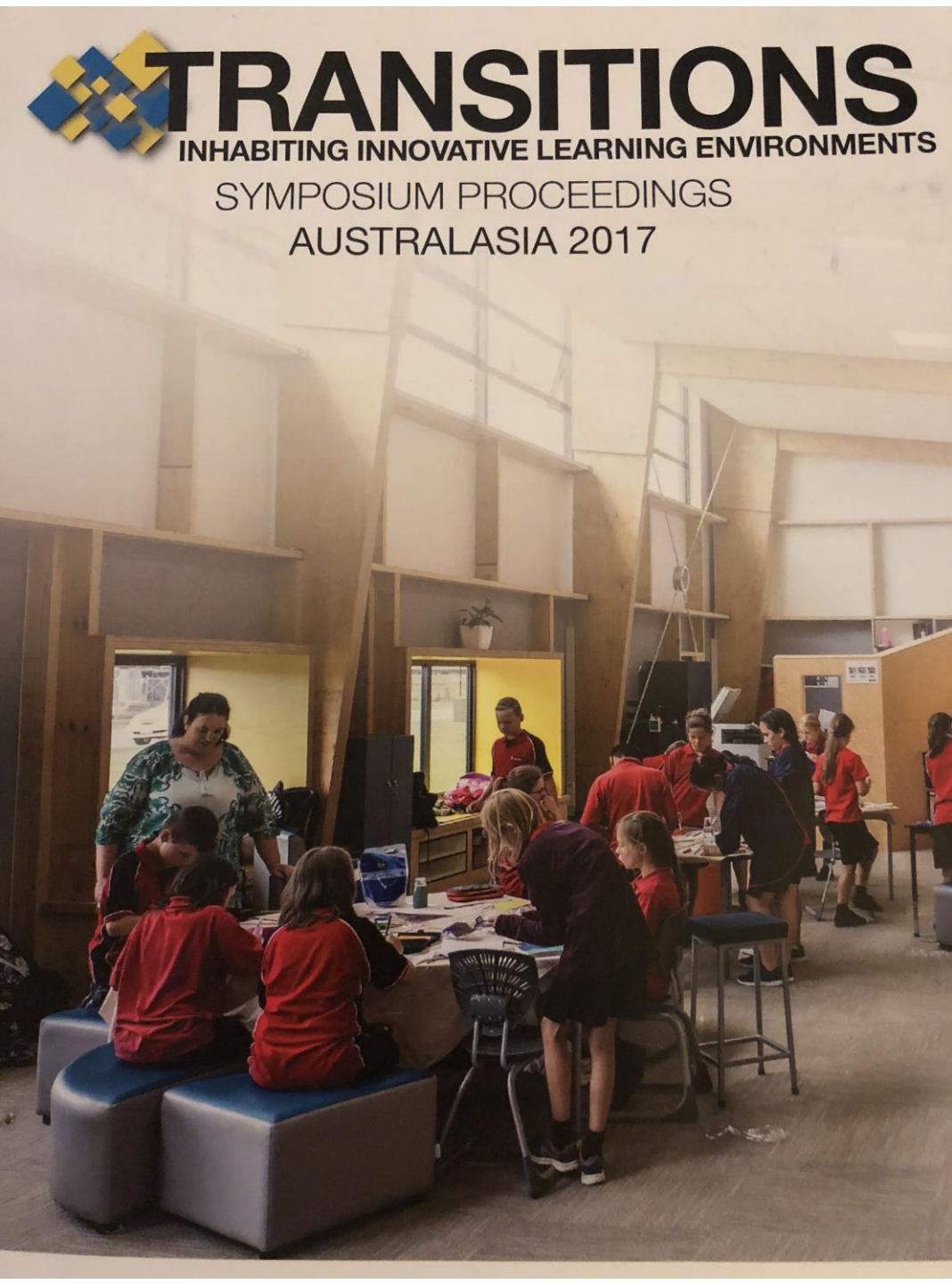
INHABITING INNOVATIVE LEARNING ENVIRONMENTS
SYMPOSIUM PROCEEDINGS
AUSTRALASIA 2017



TRANSITIONS
INHABITING INNOVATIVE LEARNING ENVIRONMENTS
SYMPOSIUM PROCEEDINGS
AUSTRALASIA 2017

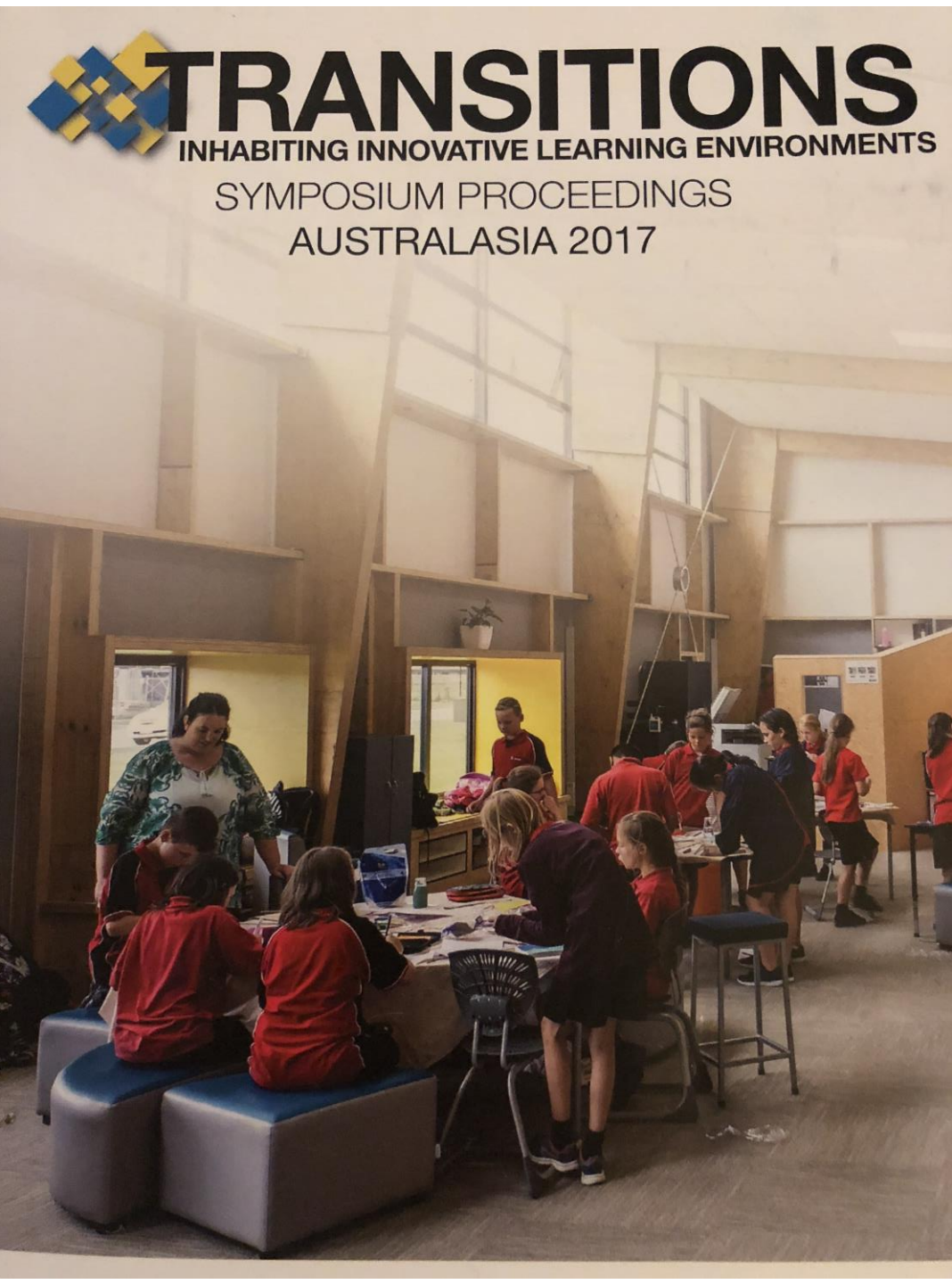


a significant terrain



a significant terrain

navigate and negotiate



a significant terrain

navigate and negotiate

*autonomously and
spatially privately*

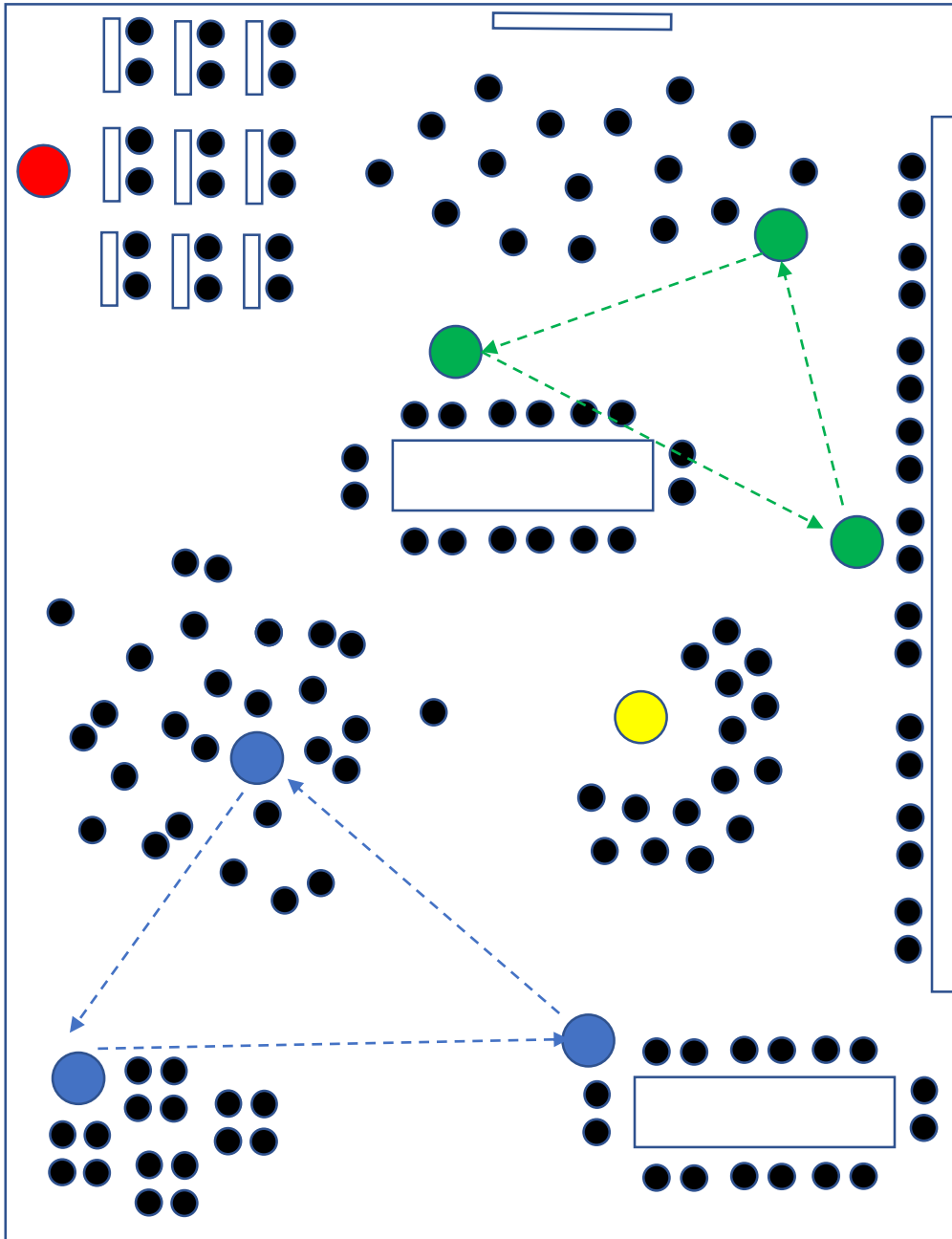


a significant terrain

navigate and negotiate

*autonomously and
spatially privately*

*by default collaborative
and proximal*



- Flexibility of space
- Adaptability of furniture
- Student agency
- Integrating across curriculum areas
- Multi-modal and technology rich learning environments





Learn Unlearn Relearn





How might teachers be supported and equipped to adapt their professional practice to fully utilise the opportunities for student deep learning in the innovative learning environment?

Leadership

Team Dynamics

Shared Language

Time for
collaboration
and planning

Leadership

Leadership

Team Dynamics

Leadership

Team Dynamics

Shared Language

Leadership

Team Dynamics

Shared Language

Time for
collaboration
and planning



“Team learning is vital because teams, not individuals, are the fundamental learning unit in modern organisations... unless teams can learn, the organisation cannot learn”

Senge, P. (2006)
The Fifth Discipline



From: <http://www.wordslingersok.com/2014/01/passing-the-baton-will-you-take-it>

